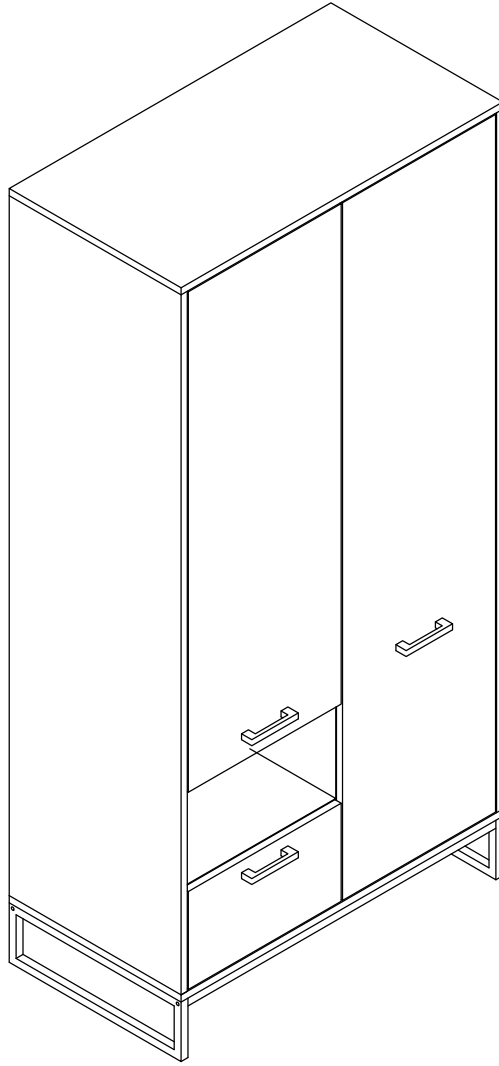
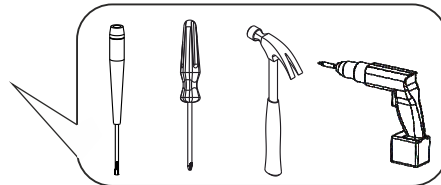
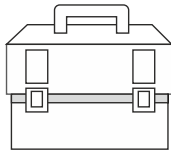
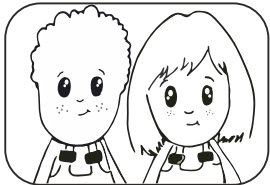


# yukon gardırop

furmet



MOYEN-MEDIUM  
MITTEL-MEDIO



**TR/** Eğer ürününüzle ilgili yardıma ihtiyacınız olursa email: [info@furmet.com.tr](mailto:info@furmet.com.tr)

**UK/** If you need information about your product, email: [info@furmet.com.tr](mailto:info@furmet.com.tr)

**GE/** Wenn Sie Fragen zu Ihrem Produkt, email: [info@furmet.com.tr](mailto:info@furmet.com.tr)

**FR/** Si vous avez des questions sur votre produit, email: [info@furmet.com.tr](mailto:info@furmet.com.tr)

**ES/** Si tiene alguna pregunta acerca de su producto, email: [info@furmet.com.tr](mailto:info@furmet.com.tr)

**PT/** Se você tiver dúvidas sobre o seu produto, email: [info@furmet.com.tr](mailto:info@furmet.com.tr)

**SE/** Om du har frågor om din produkt, email: [info@furmet.com.tr](mailto:info@furmet.com.tr)

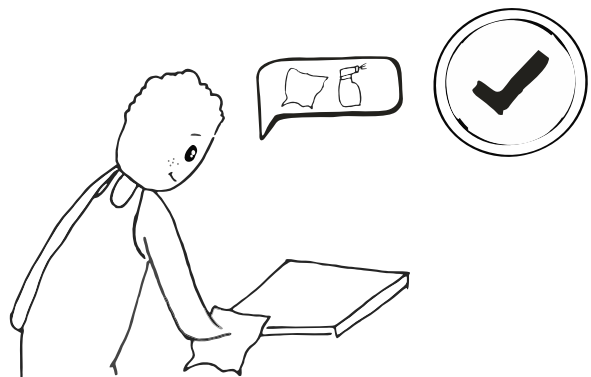
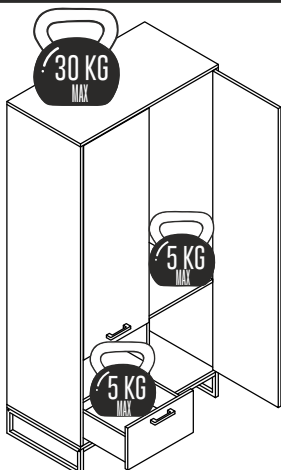
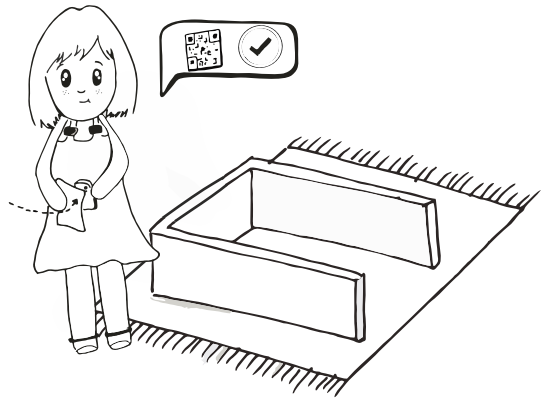
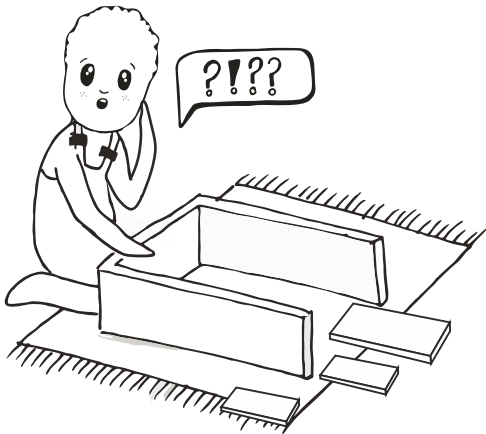
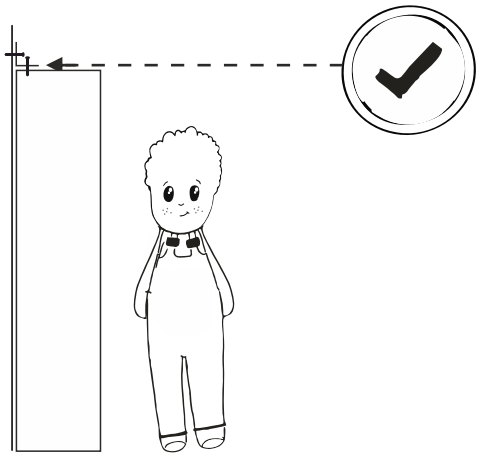
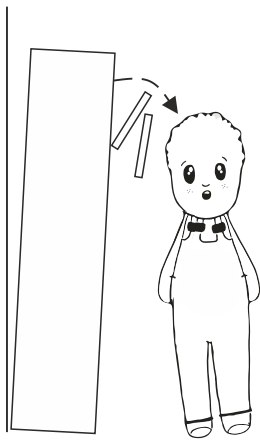
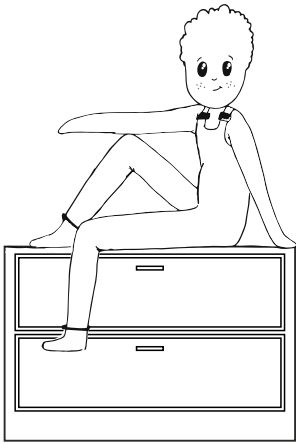
**NW/** Hvis du trenger informasjon om produktet, email: [info@furmet.com.tr](mailto:info@furmet.com.tr)

**IT/** Se hai delle domande sul tuo articolo, ecco la mail via nuestro website

**PL/** Jeśli mają Państwo pytania dotyczące produktu, email: [info@furmet.com.tr](mailto:info@furmet.com.tr)

**RU/** Если Вам необходима дополнительная информация о товаре, свяжитесь с нами по email: [info@furmet.com.tr](mailto:info@furmet.com.tr)

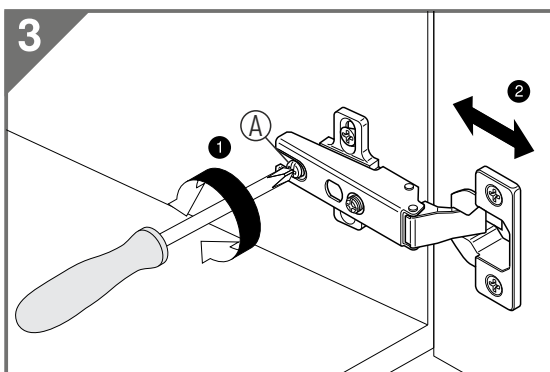
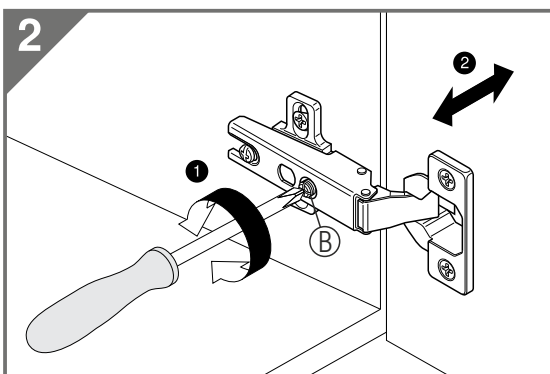
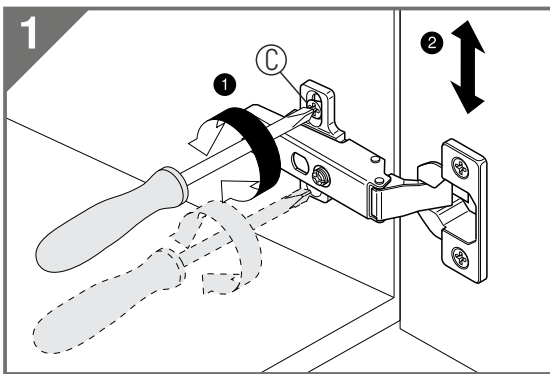
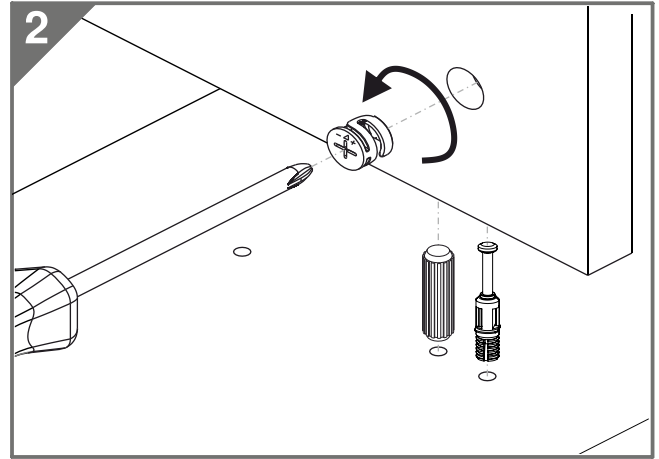
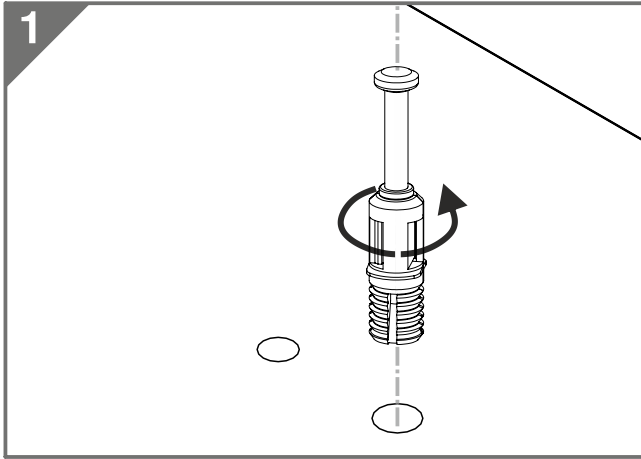
# hey you!



PS: Clean only with a damp cloth.  
NOT: Yalnızca nemli bir bezle temizleyiniz.

# caution!

Minifix is the main connection material used in products. Before starting assembly, please check the drawings below.

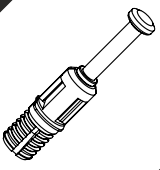


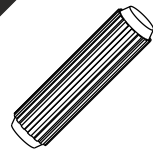
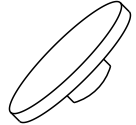


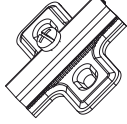

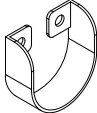
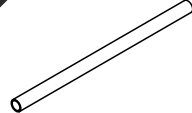
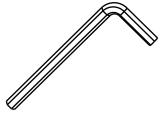


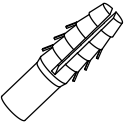
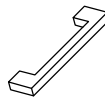
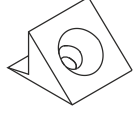

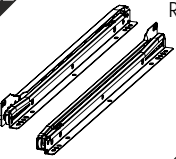

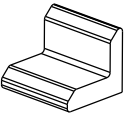
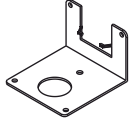




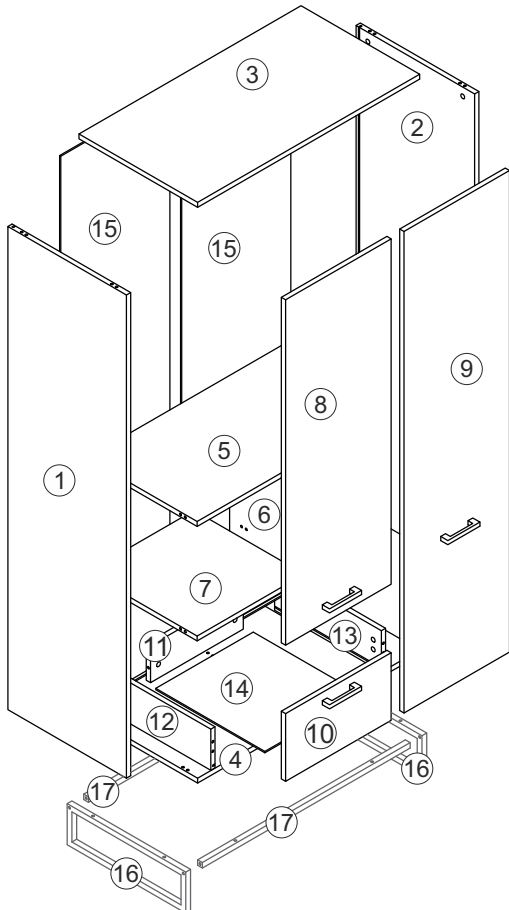
Height adjustment: Loosen screw 'C', adjust height, retighten screw 'C'.

Depth adjustment: Loosen fixing 'A', push hinge arm forwards or backwards, retighten screw 'A', fix screw 'B' with a 1/4- turn in clock-wise direction.

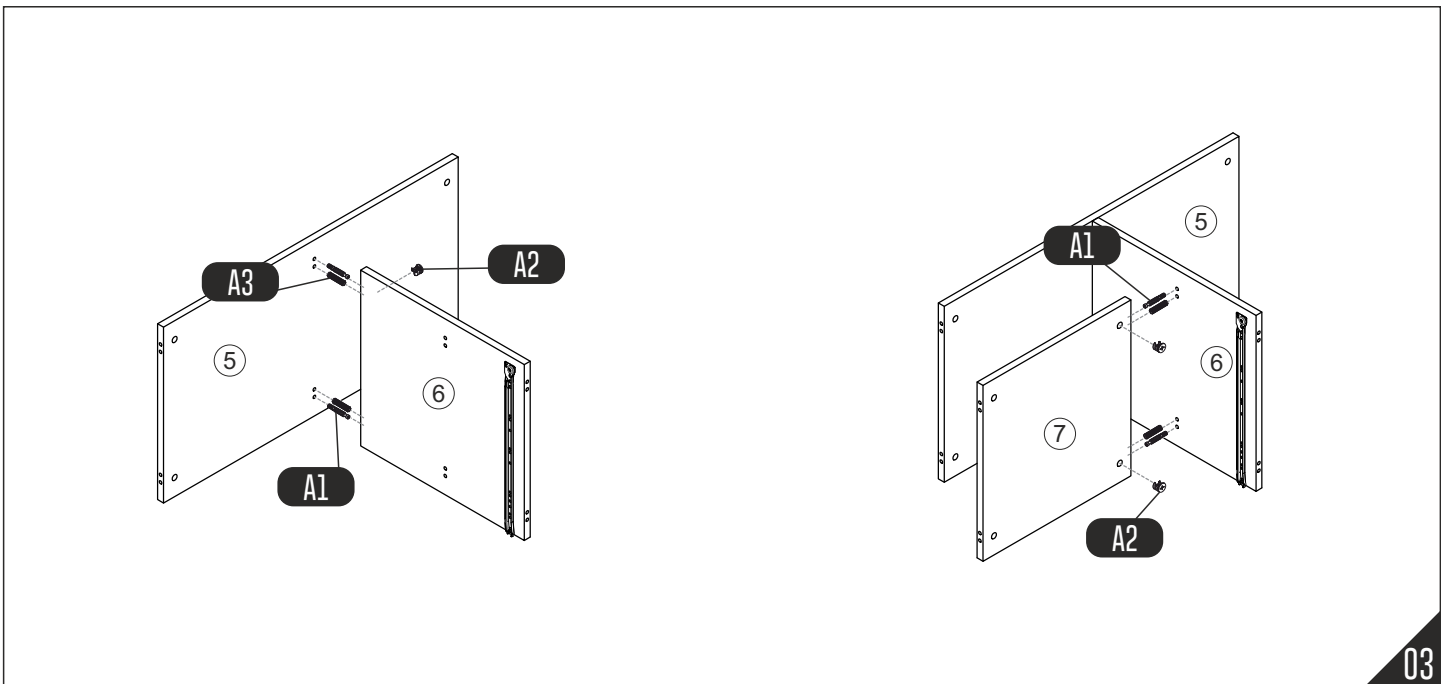
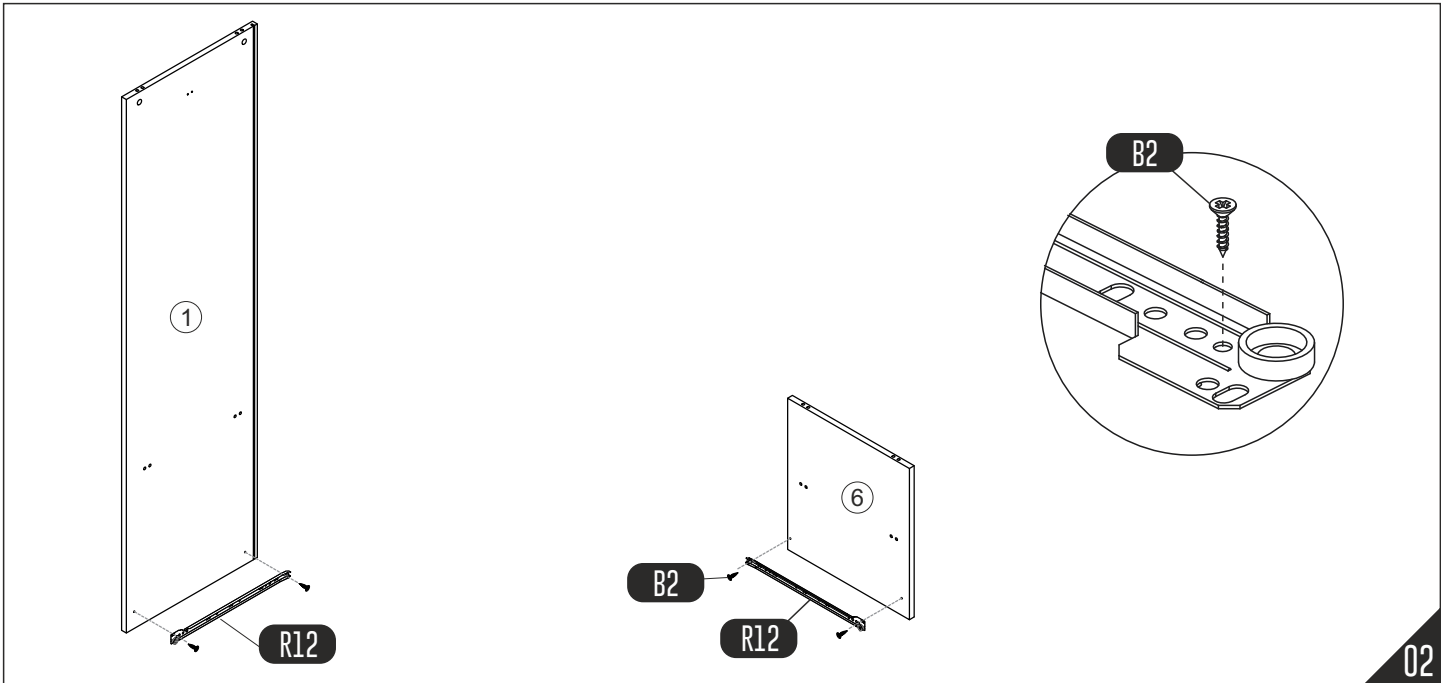
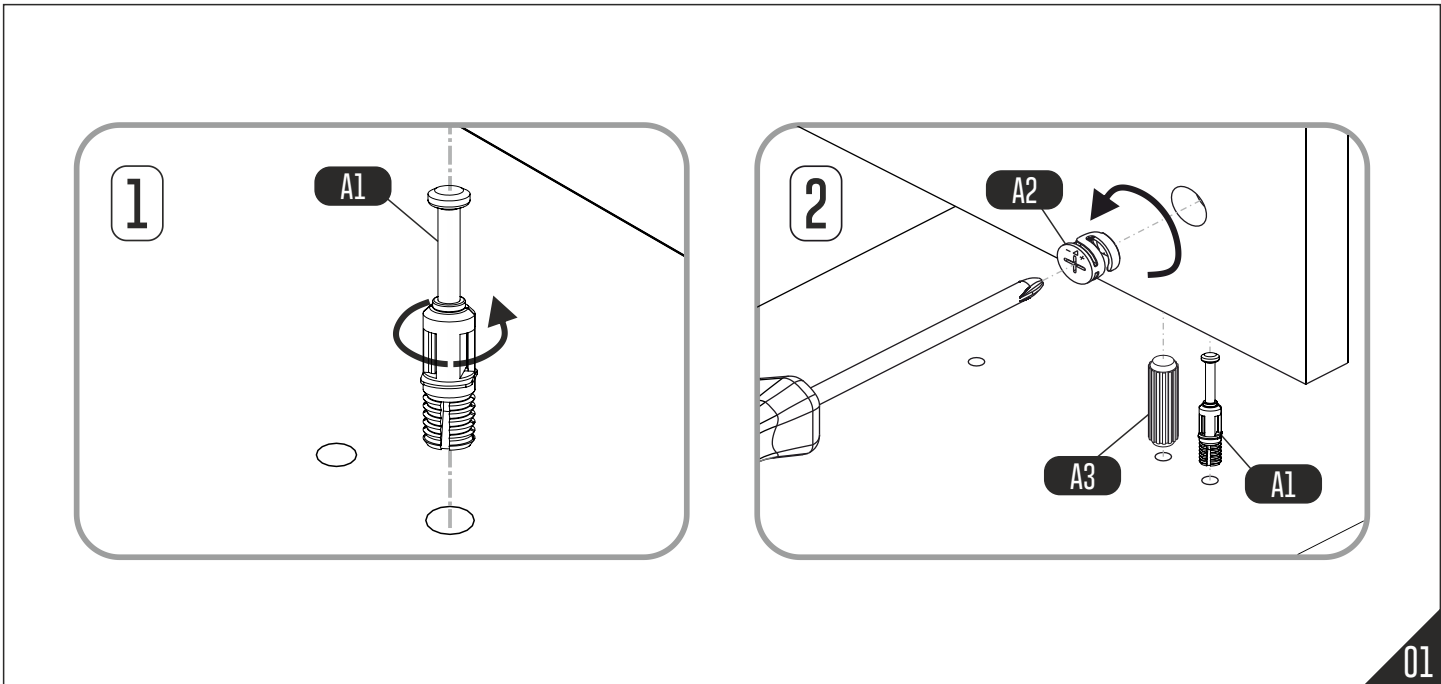
Side adjustment: Loosen fixing screw 'A', adjust gap with screw 'B' and retighten screw 'A'.

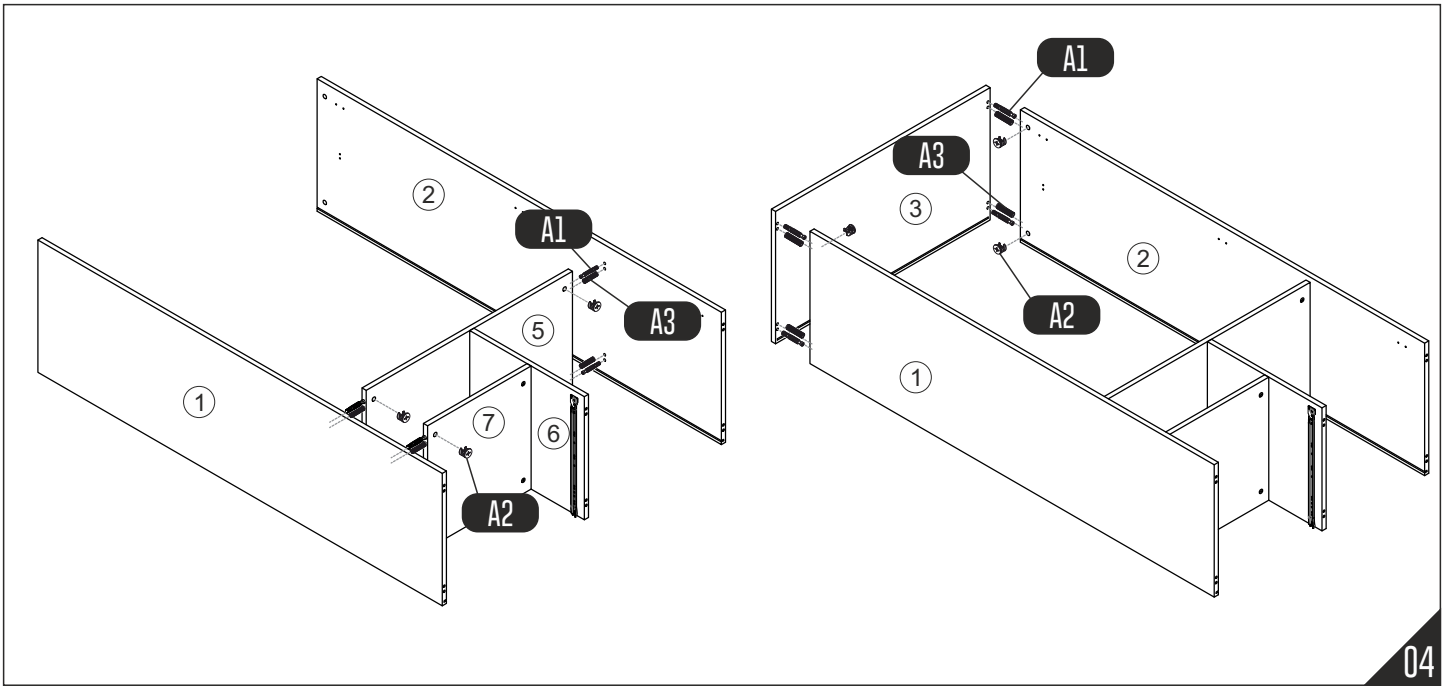
# TOOLBOX

<b>A1</b> DÜBELLİ MİNİFIX MİLİ  x22	<b>A2</b>  x22	<b>A6</b>  x8	<b>A3</b>  x20	<b>T32</b> DOĞAL MEŞE  x22	<b>B19</b> 20'LİK KULP VİDASI  x6
<b>M3</b> SÜPER DEVE MENT.  x3	<b>M4</b> MENTEŞE K.  x5	<b>B18</b> CONFIRMAT VIDA  x6	<b>C3</b> FLANŞ  x2	<b>C4</b> ASKI BORUSU 890 mm  x1	<b>Y1</b> ALYAN  x1
<b>B1</b> çivi  x4	<b>B2</b> 3,5*18 MM  x54	<b>B3</b> DÜBEL  x2	<b>K11</b> 128mm KÖPRÜ KULP SİYAH  x3	<b>B30</b> ARKALIK SIKIŞTIRMA  x18	<b>B32</b> 6X30 MM ALYAN BAŞLI METAL VİDASI  x12
<b>R12</b> 450mm TEKERLEKLI RAY SİYAH  x1	<b>B5</b> 5*70 MM  x2	<b>B11</b> ASKI APARATI  x2	<b>B12</b> ASKI APARATI  x2	<b>P23</b> 20X20 KEÇE  x4	<b>M7</b> FRENLI SD. MENT.  x2

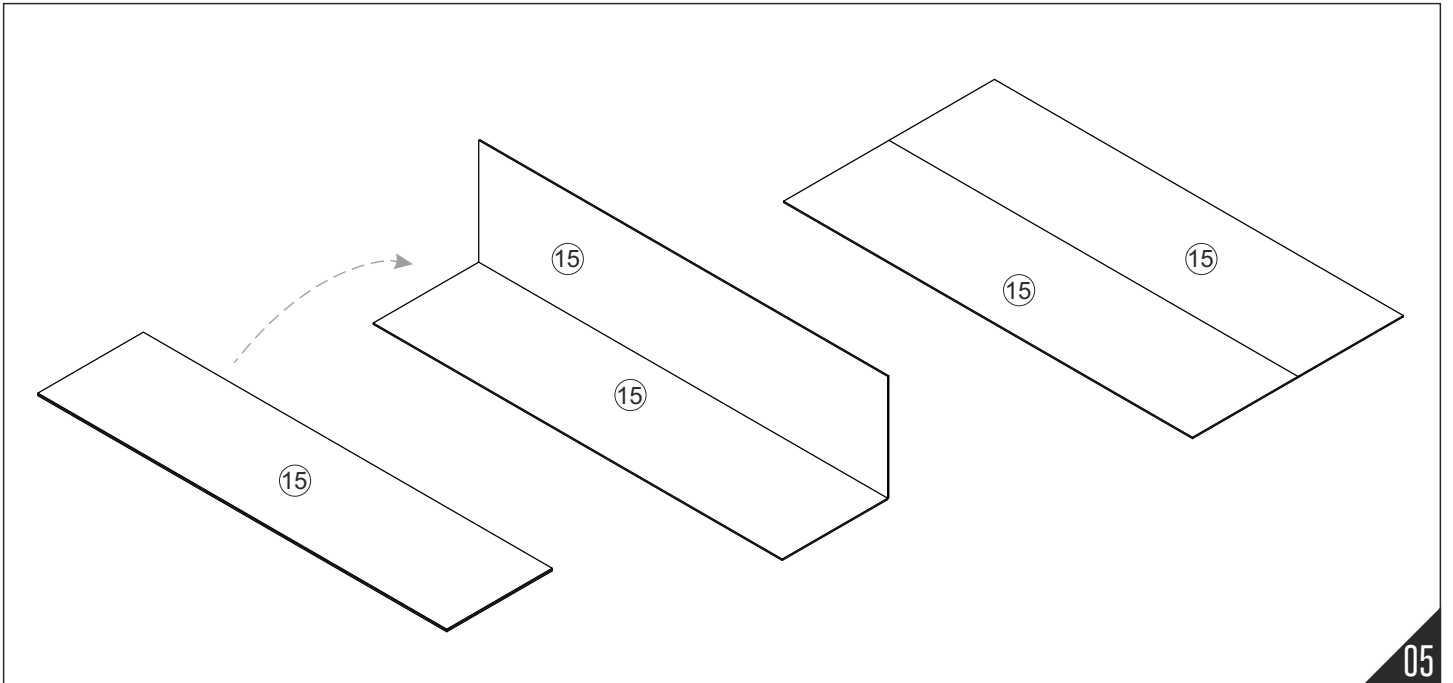


No.	Qty.
1	1
2	1
3	1
4	1
5	1
6	1
7	1
8	1
9	1
10	1
11	1
12	1
13	1
14	1
15	2
16	2
17	2

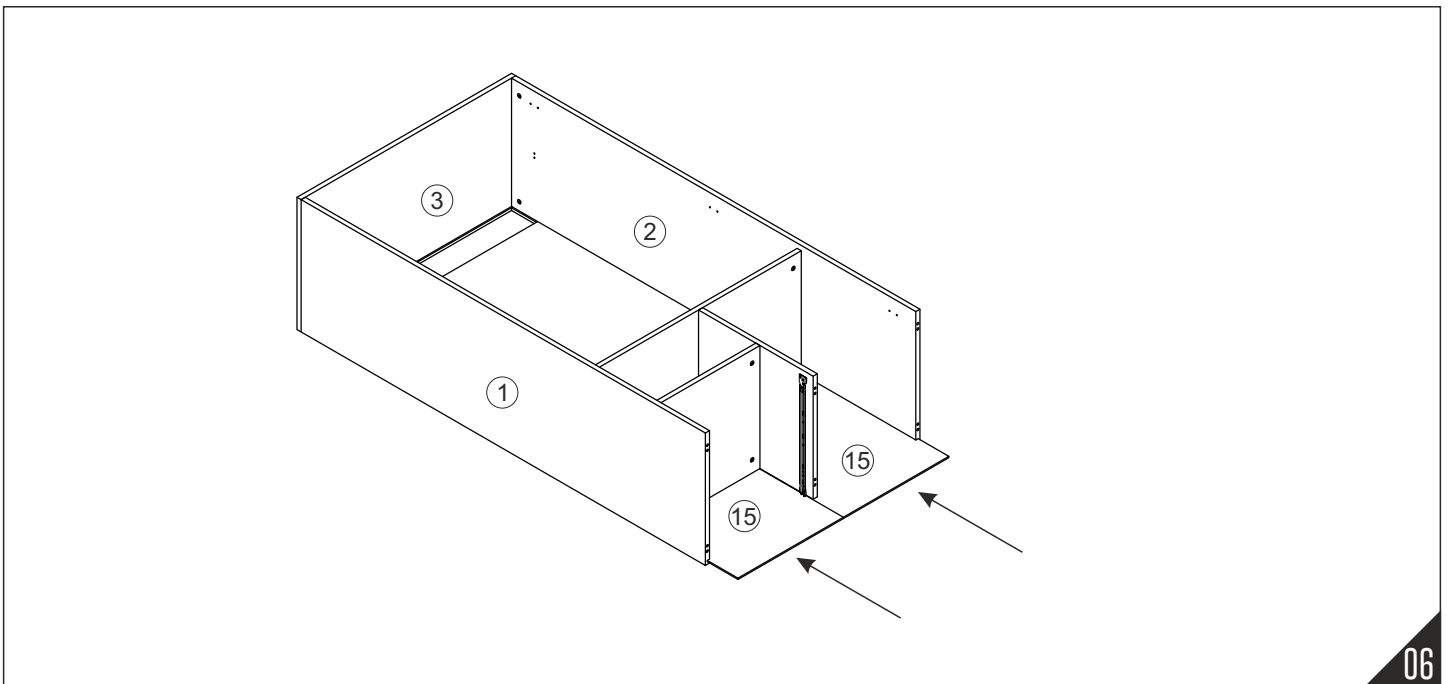




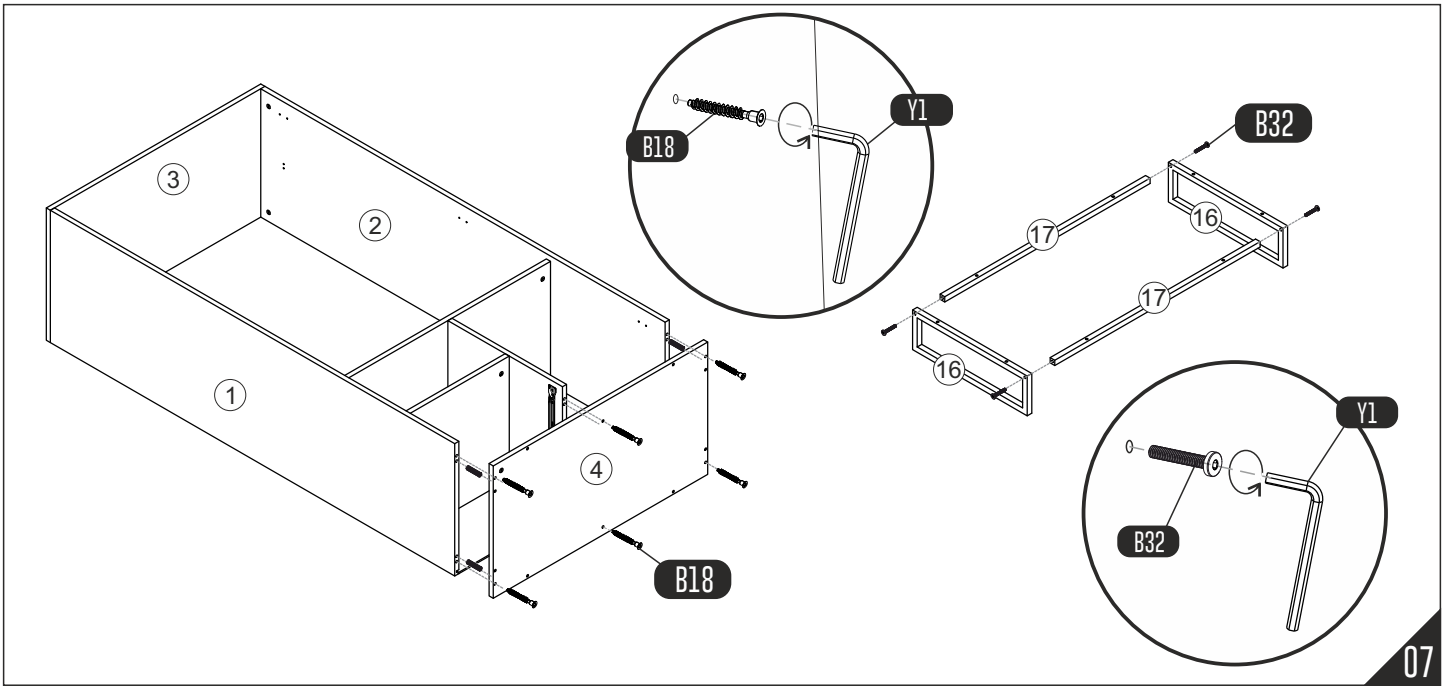
04



05

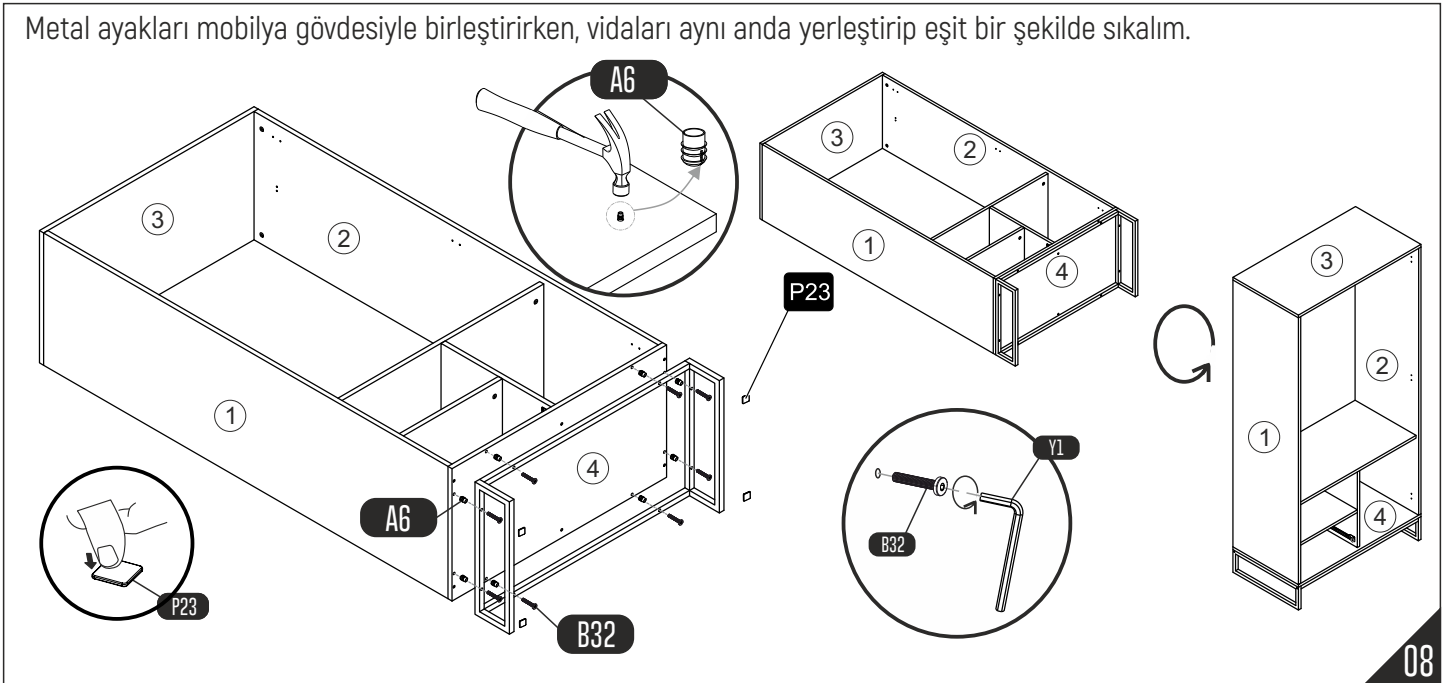


06

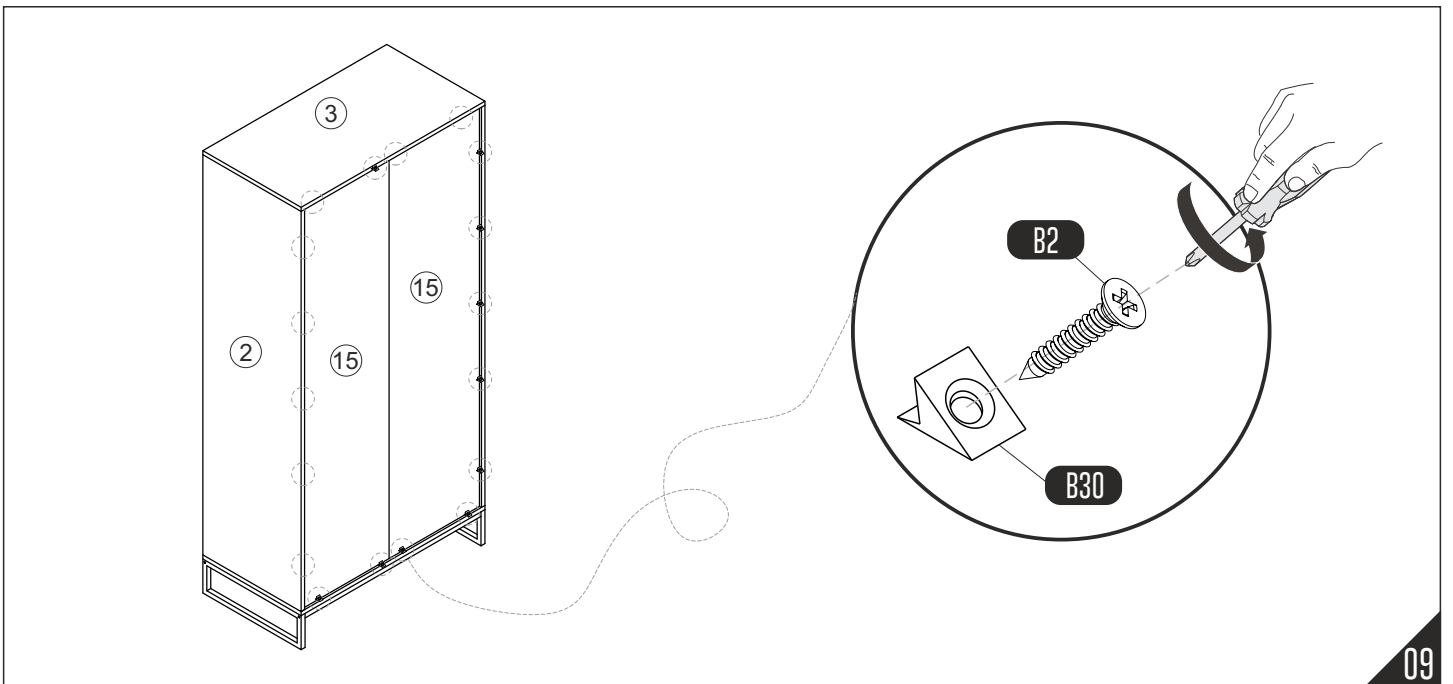


07

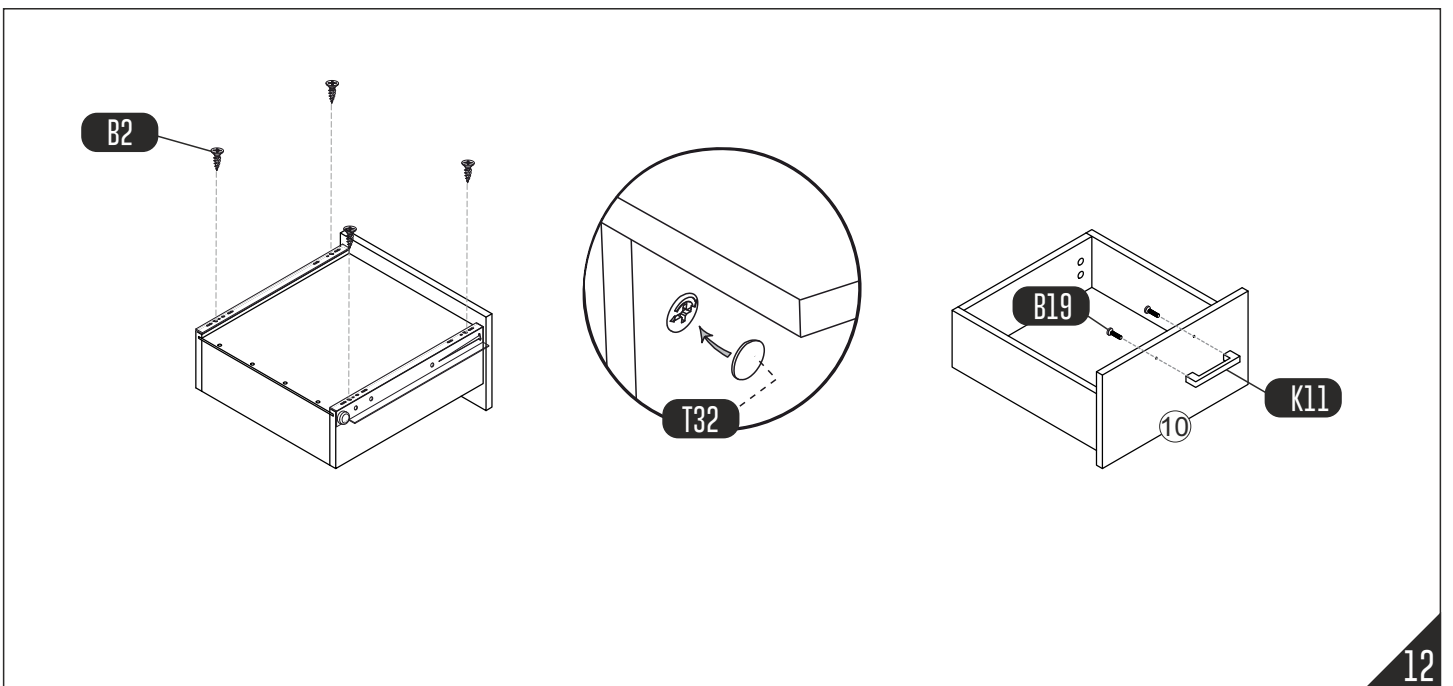
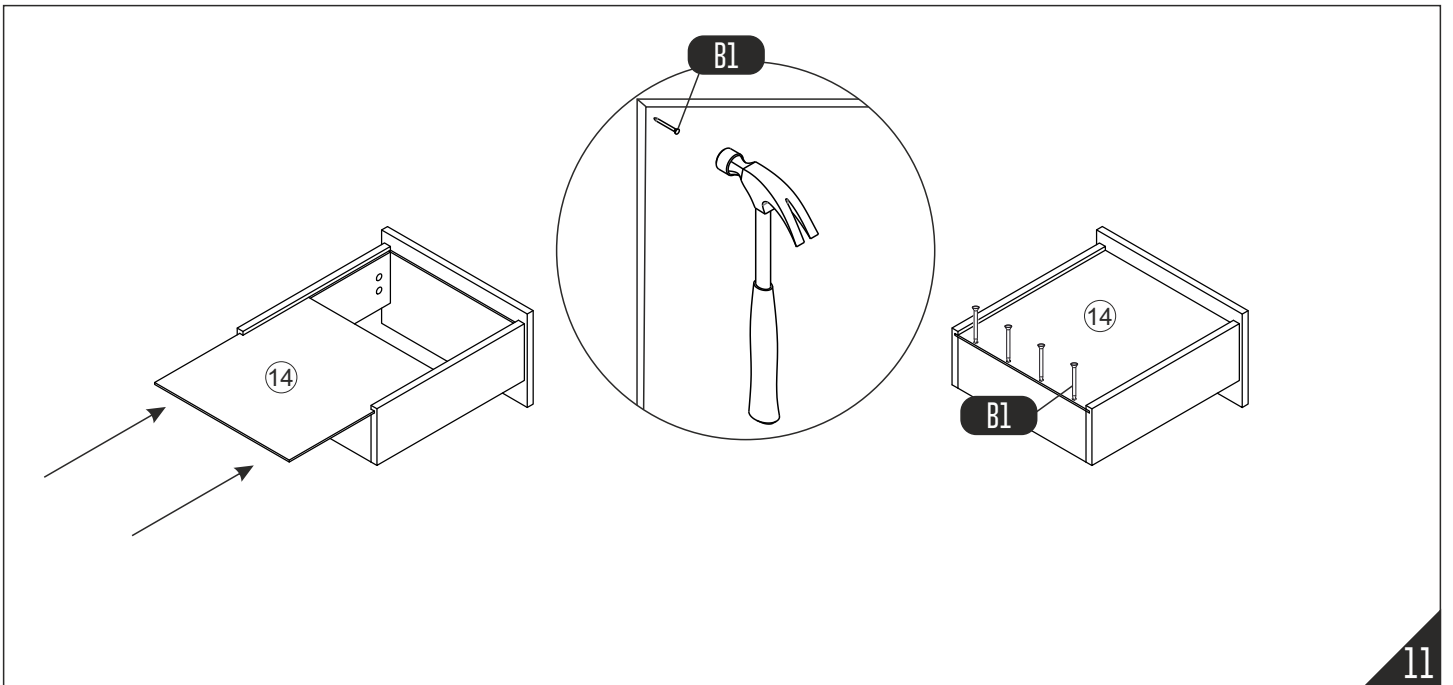
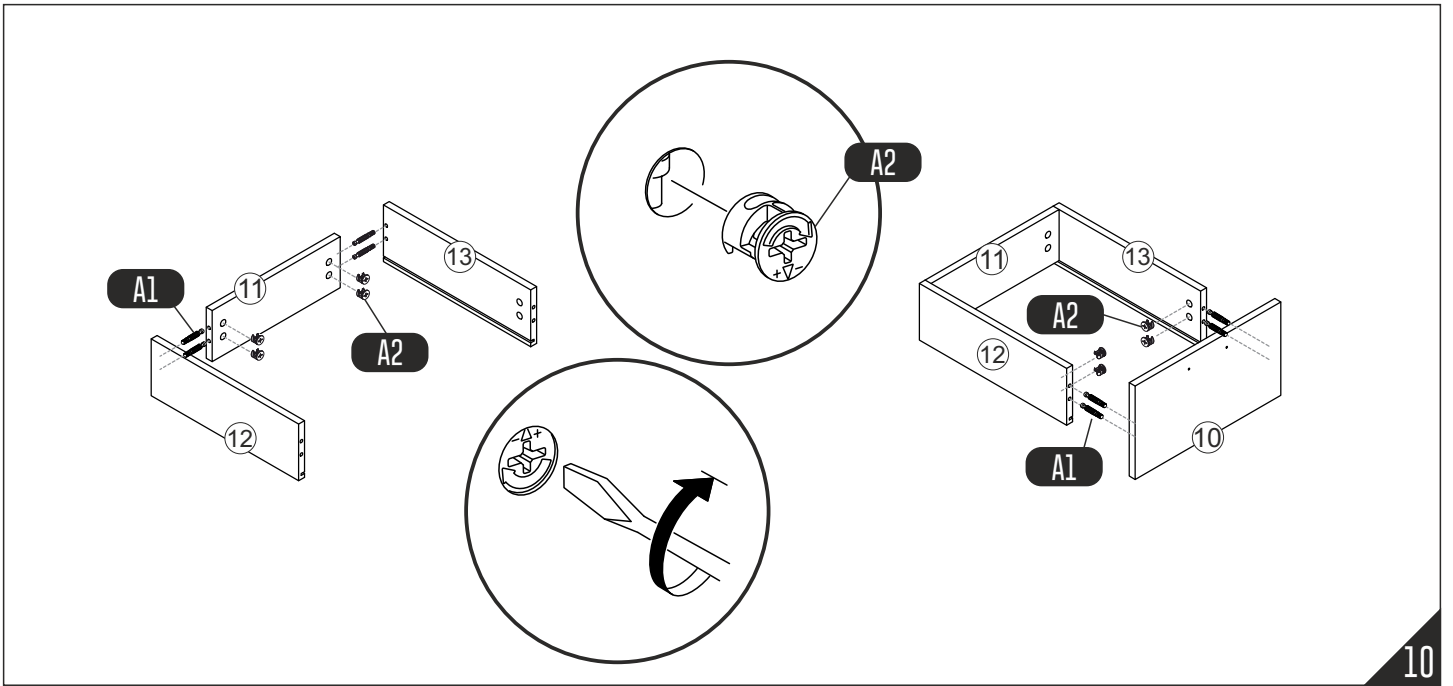
Metal ayakları mobilya gövdesiyle birleştirirken, vidaları aynı anda yerleştirip eşit bir şekilde sıkalım.



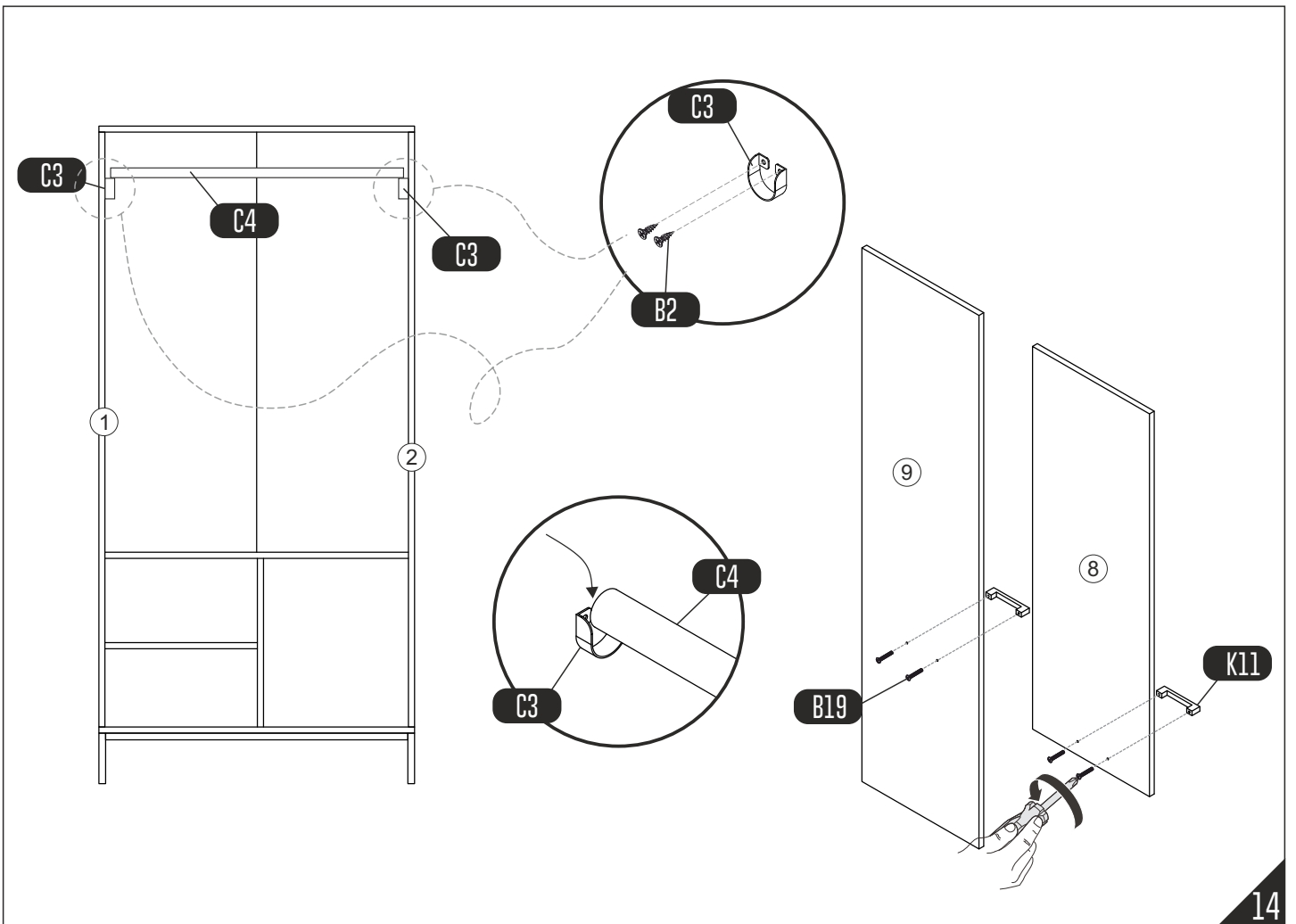
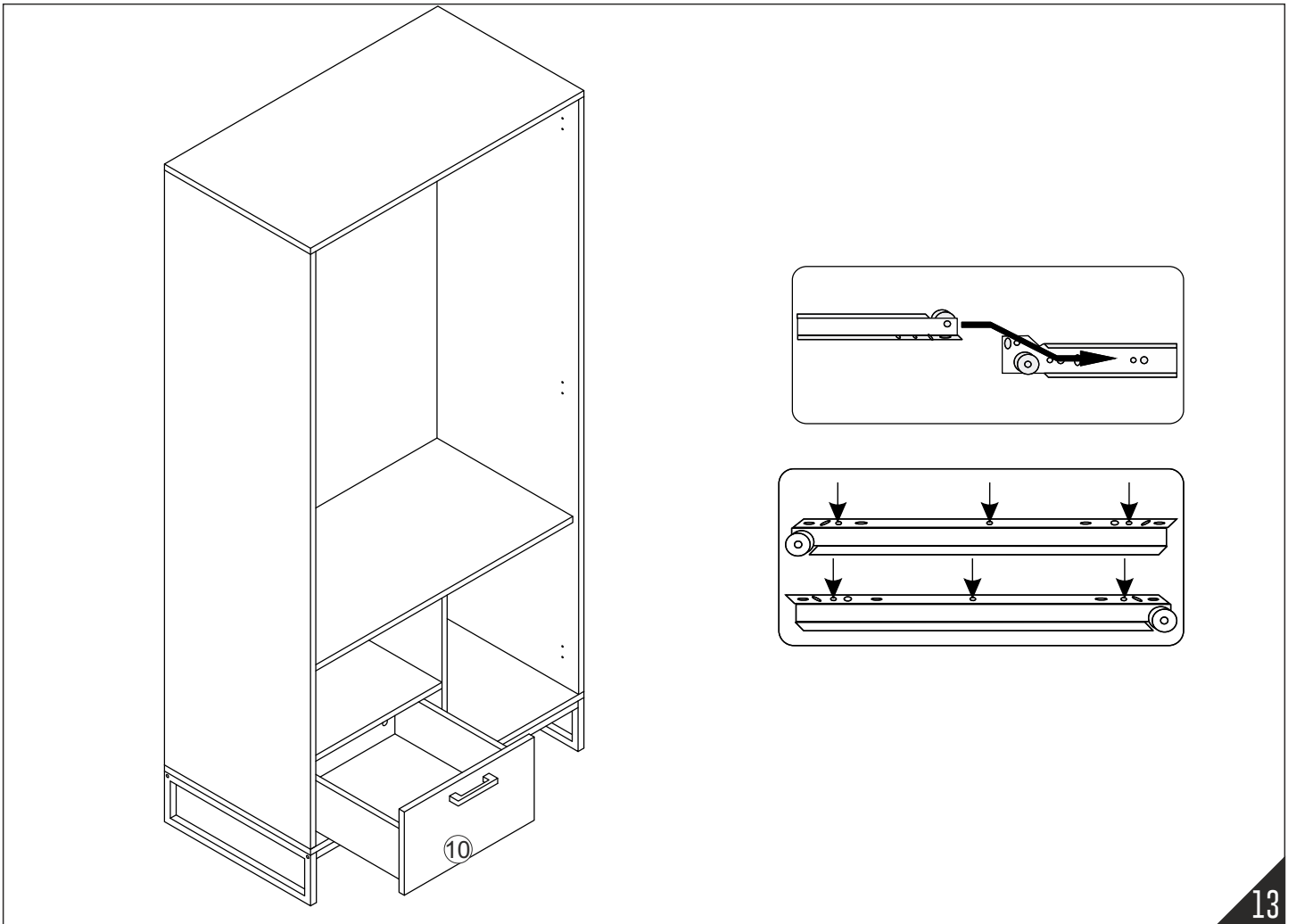
08

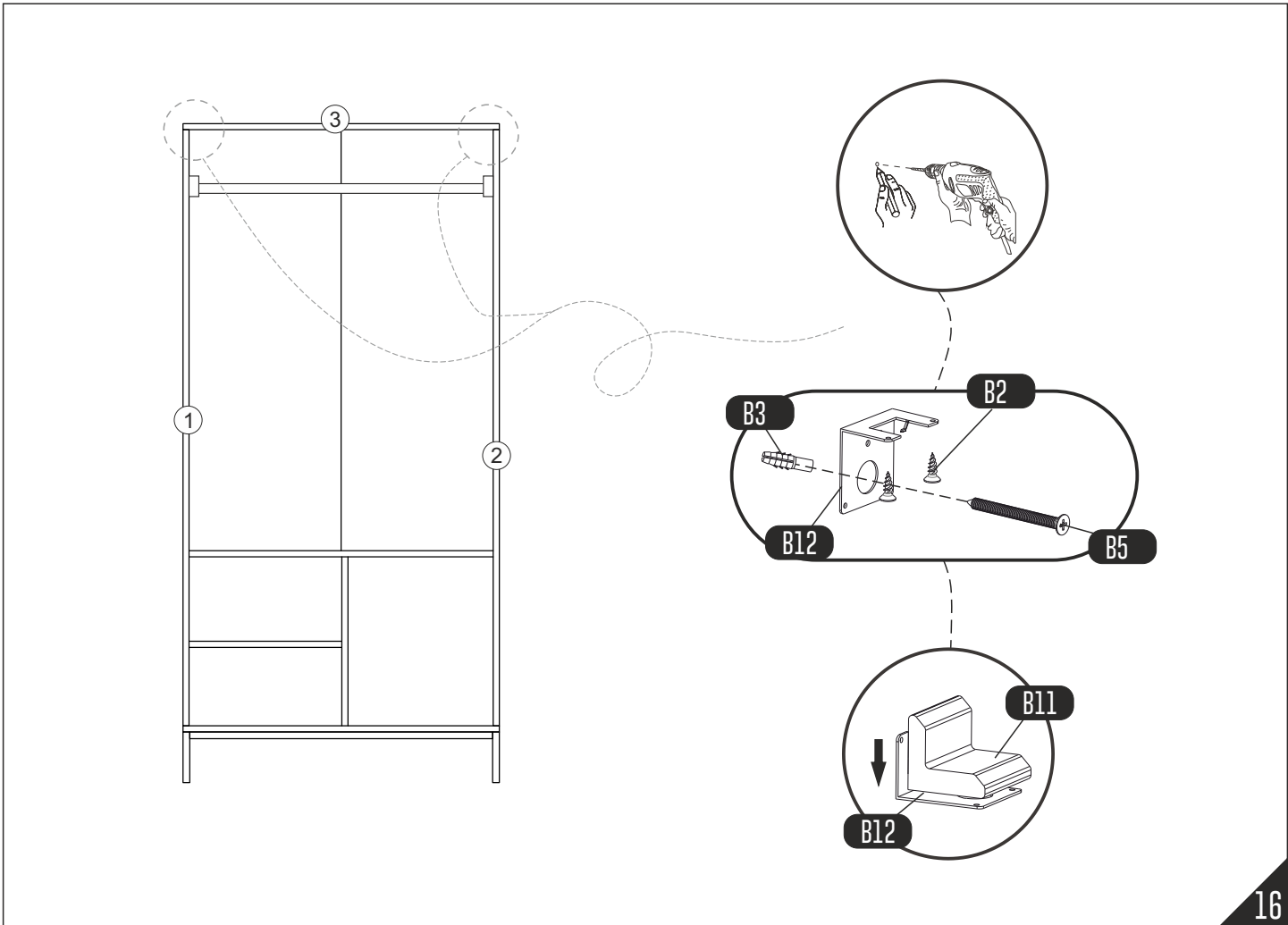
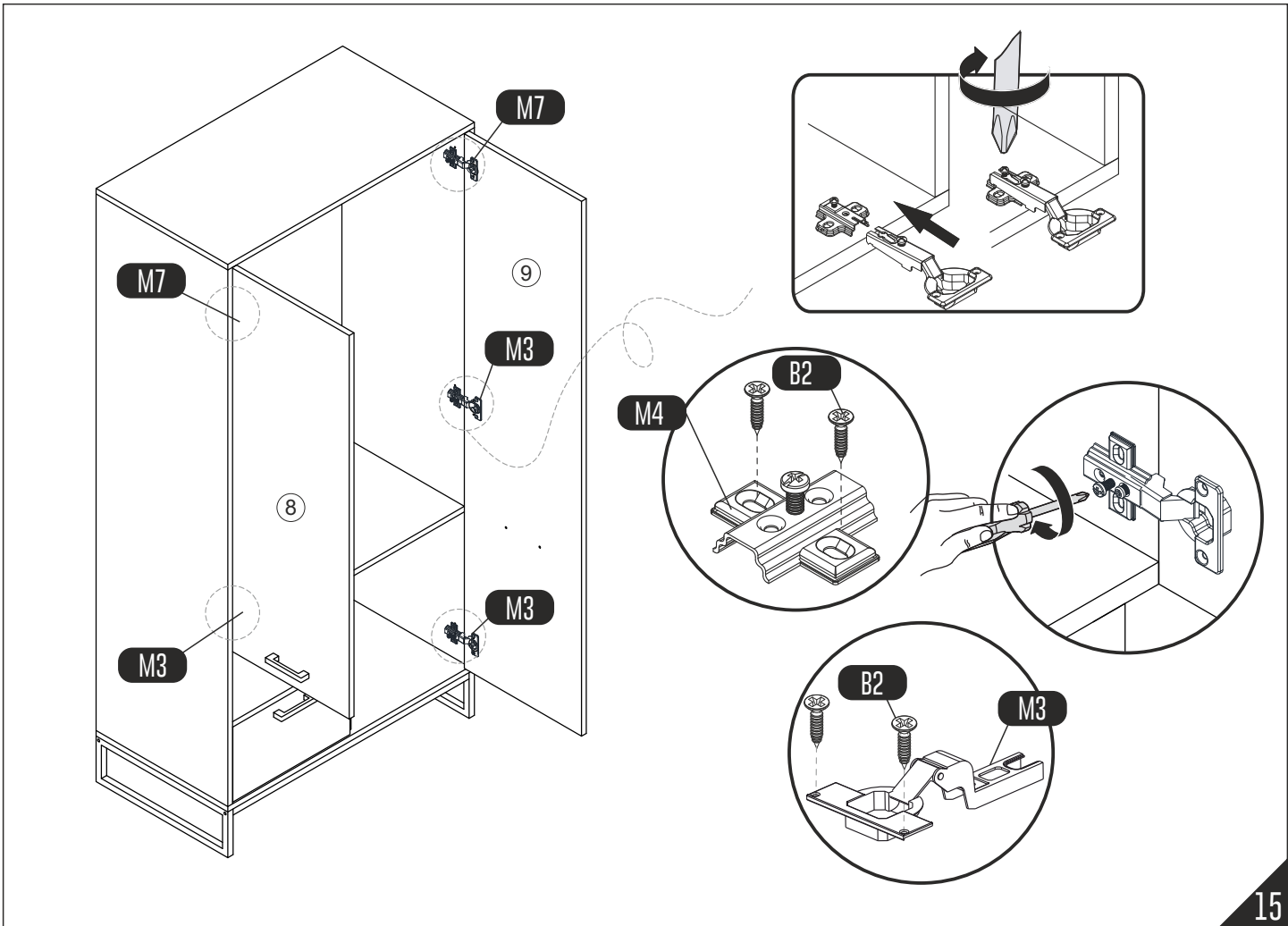


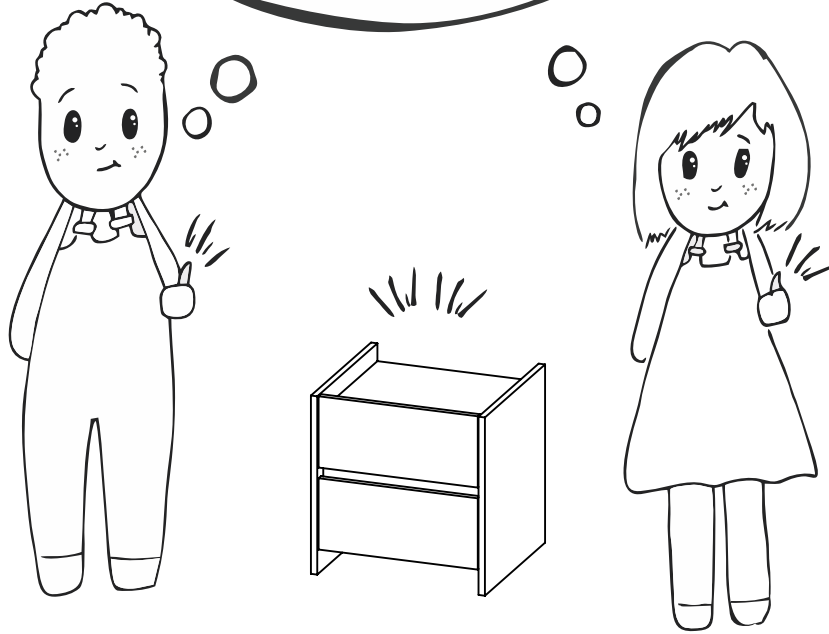
09











Have you seen our other products ?

[www.furmet.com.tr](http://www.furmet.com.tr)

